



Chain swing RH110D (f.h. 1,5 m)

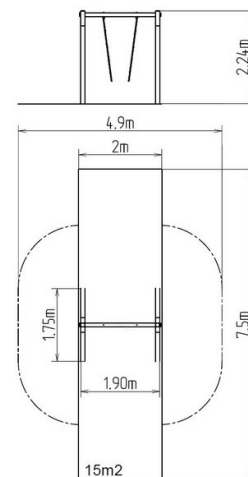
Product type RH-110D-15

Basic information

Age category	2 - 15 years
Minimum area	4,9 m x 7,5 m
Equipment measurements	1,9 m x 1,75 m x 2,24 m
Free fall height:	1,5 m
Load capacity:	54 kg
Max. number of users:	1
Fall zone: EN 1177	Rubber or gravel, 15 m ²
Designation:	exterior
Availability of spare parts:	supplied by the
Certificate of Compliance:	ČSN EN 1176 - 1, 2

Material

Wooden units - thick glued wooden supports
Metal units - structural steel



Finish

Impregnation and coating with a triple layer of lacquer
Hot-dip galvanizing

Description

The swing's support structure is made from thick glued wooden supports. This solution ensures maximum protection against cracking, which is common for products made from solid wood. The wooden supports are impregnated and coated with a triple layer of lacquer, which meets the terms and conditions of the EN71/3 Standard (safe for children's toys). The structures are anchored into the ground in steel plates, which are protected against corrosion by hot-dip galvanizing and fixed in a concrete bed. The anchors are fastened to the play unit with bolts and their structure ensures that they are not in direct contact with the ground.

The swing is hung on a metal girder using galvanized chains. All fastening material is galvanized or stainless steel.