



## Quadralupe chain swing RH410KW - Brown (f.h. 1 m)

Product type RH-410KW-10

### Basic information

|                              |                        |
|------------------------------|------------------------|
| Age category                 | 2 - 15 years           |
| Minimum area                 | 8,9 m x 7 m            |
| Equipment measurements       | 5,9 m x 1,4 m x 1,77 m |
| Free fall height:            | 1 m                    |
| Load capacity:               | 216 kg                 |
| Max. number of users:        | 4                      |
| Fall zone: EN 1177           | Grass surface          |
| Designation:                 | exterior               |
| Availability of spare parts: | supplied by the        |
| Certificate of Compliance:   | ČSN EN 1176 - 1, 2     |

### Material

Metal units - structural steel

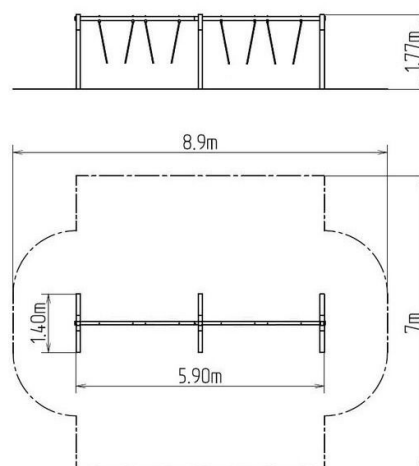
### Finish

Duplex powder coated with coat curing  
Hot-dip galvanizing

### Description

The support structure of the swing is made from structural steel, which is zinc coated and KOMAXIT powder coated according to the RAL colour chart and is fixed in a concrete bed.

The swings are hung on a metal girder using galvanized chains. All fastening material is galvanized or stainless steel.



### Equipment

We offer three color variants of the support structure - red, blue and brown.