

Skill trail SD111KR-Q - red (Coastal region)

Product type SD-111KR-10-Q

Basic information

Age category	2 - 10 years
Minimum area	4,6 m x 3,4 m
Equipment measurements	1,55 m x 0,35 m x 0,42 m
Free fall height:	0,6 m
Load capacity:	162 kg
Max. number of users:	3
Fall zone: EN 1177	Grass surface
Designation:	exterior
Availability of spare parts:	supplied by the
Certificate of Compliance:	ČSN EN 1176 - 1, 11

Material

Metal units - structural steel
Step boards - HPL

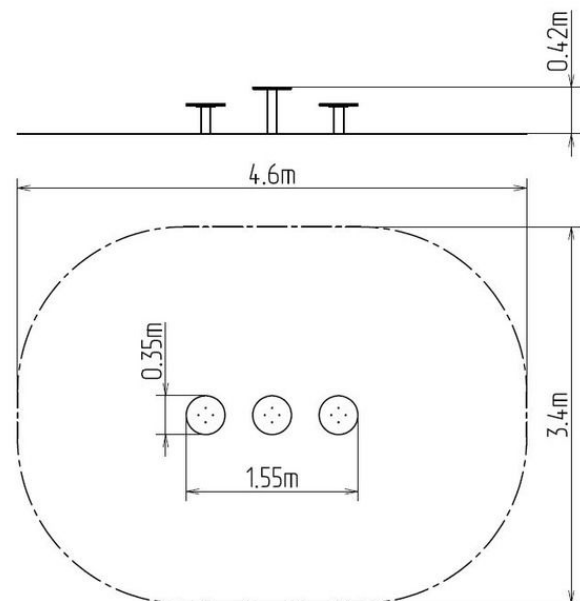
Finish

Duplex powder coated with coat curing
Hot-dip galvanizing

Description

The support structure of the skill path is made of structural steel with a diameter of 89 mm which is protected against corrosion by zinc coating, resulting in a very prolonged service life of the workout elements, and coating with baked paint KOMAXIT according to the RAL colour system. These structures are embedded in a concrete base. All other metallic elements are also zinc coated and treated with baked paint KOMAXIT according to the RAL colour system.

All step boards are made of HPL (High-pressure laminate). All connecting material is zinc or stainless steel coated.



Equipment

We offer three color variants of the support structure - red, blue and brown.